

REINHOLD ENVIRONMENTAL®



2025 Reinhold/PCUG Round Table Presentation

Hosted by AEP and Buckeye Power

in The Hilton Columbus Polaris Hotel, Columbus, OH

on June 23-24, 2025

All presentations posted on this website are copyrighted by **REINHOLD ENVIRONMENTAL®** (RE). Any unauthorized attempts to print, to download, to modify, to incorporate into other presentations, to link to other websites or to obtain copies for any other uses than the training of attendees to RE Conferences is expressly prohibited unless approved in writing by RE or the original presenter. RE does not assume any liability for the accuracy or contents of any materials in this library which were presented and/or created by persons who were not employees or subcontractors of RE.

Chemical and Physical Hazards on Back-end Pollution Control Equipment

Ian Mylenbusch
Principal Supervisor
Technical Shared Services
Southern Company



Agenda

- Hydrogen sulfide
- Sodium hypochlorite
- Chlorine
- Anhydrous ammonia
- Ash pond sloughing



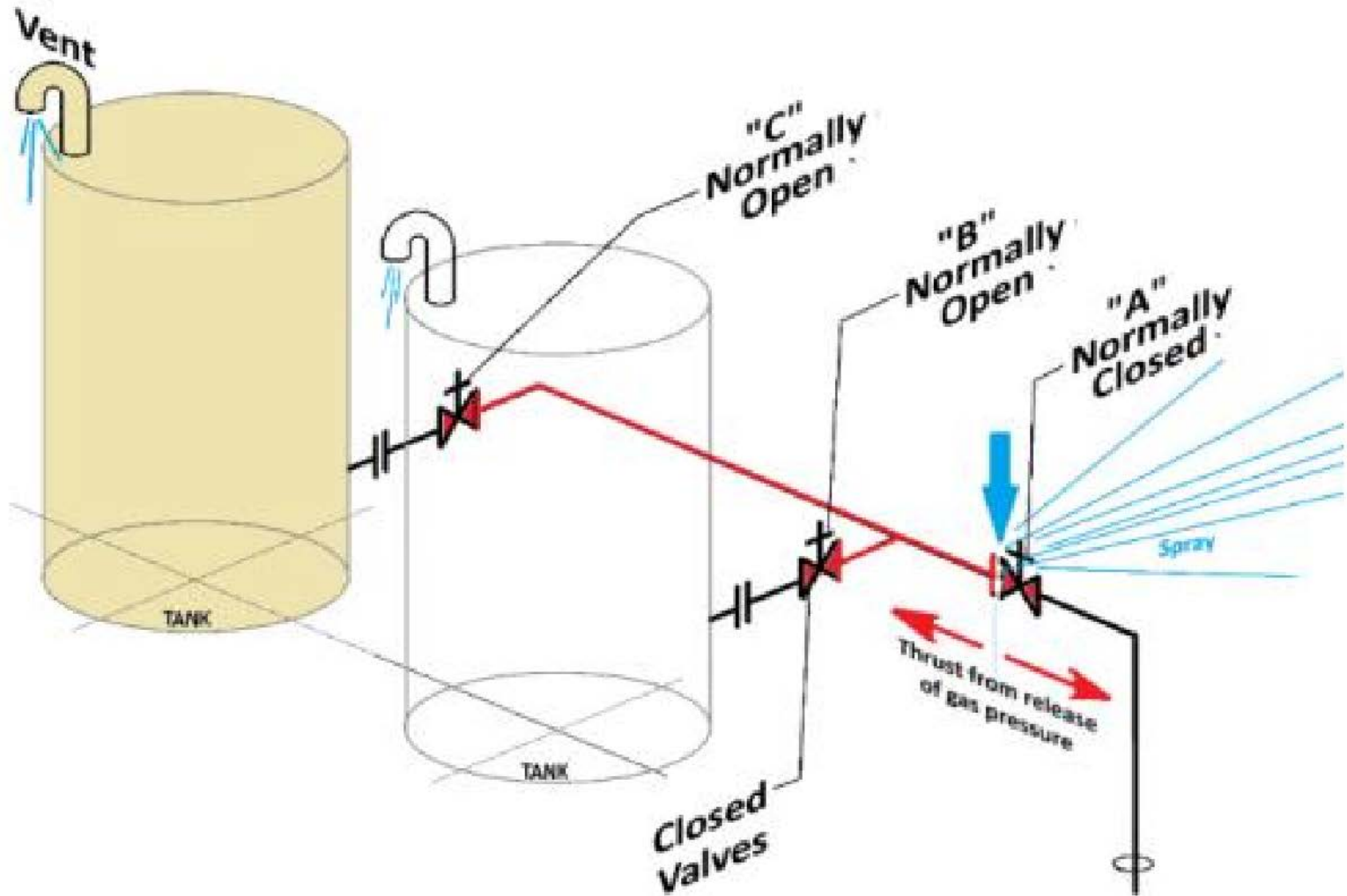
Hydrogen sulfide (H₂S)

Confined Space Incident

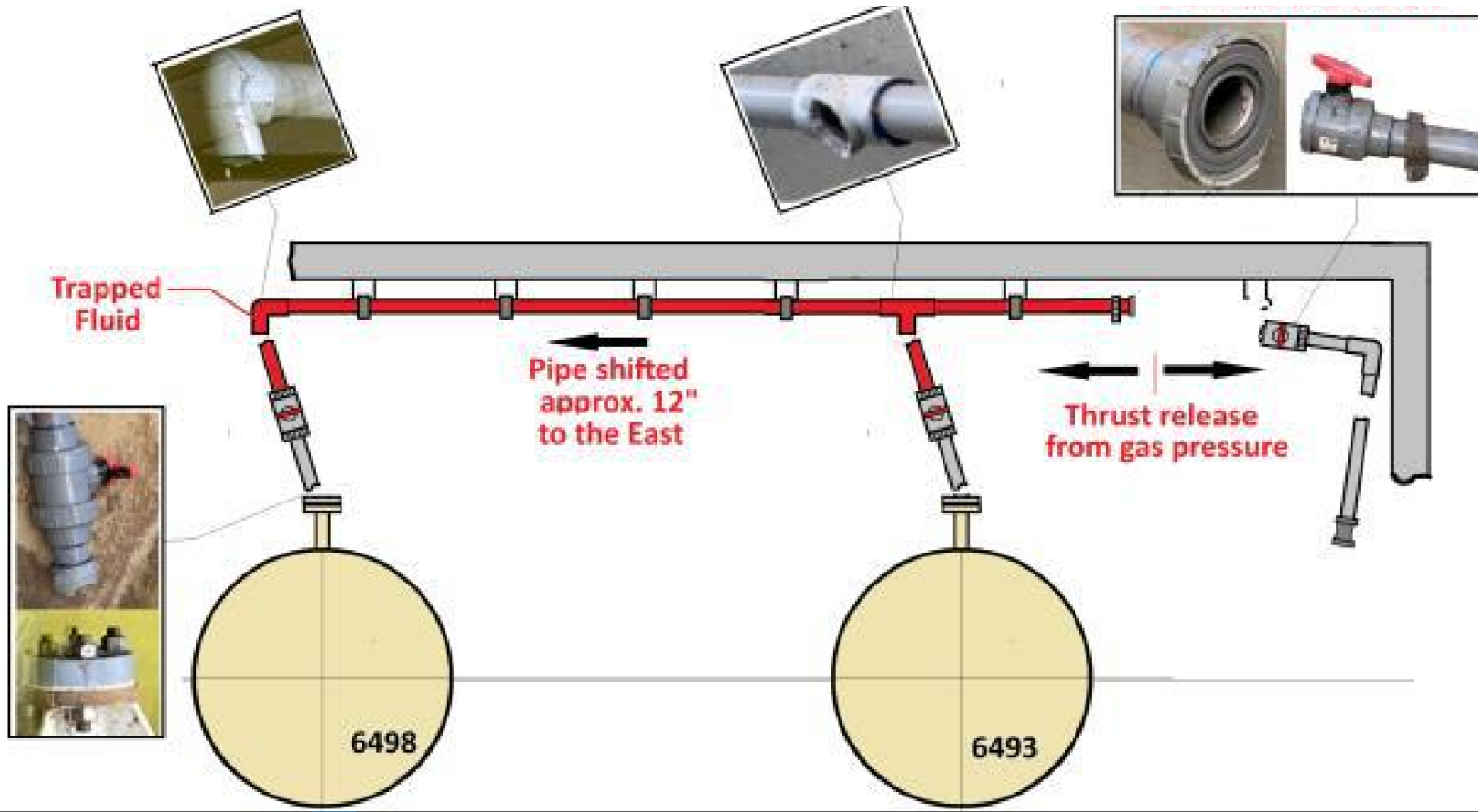


Sodium Hypochlorite (NaOCl)

Trapped line and closed valves



Trapped line and closed valves



Chlorine gas Cl_2

Chlorine offgas



Anhydrous Ammonia (NH₃)

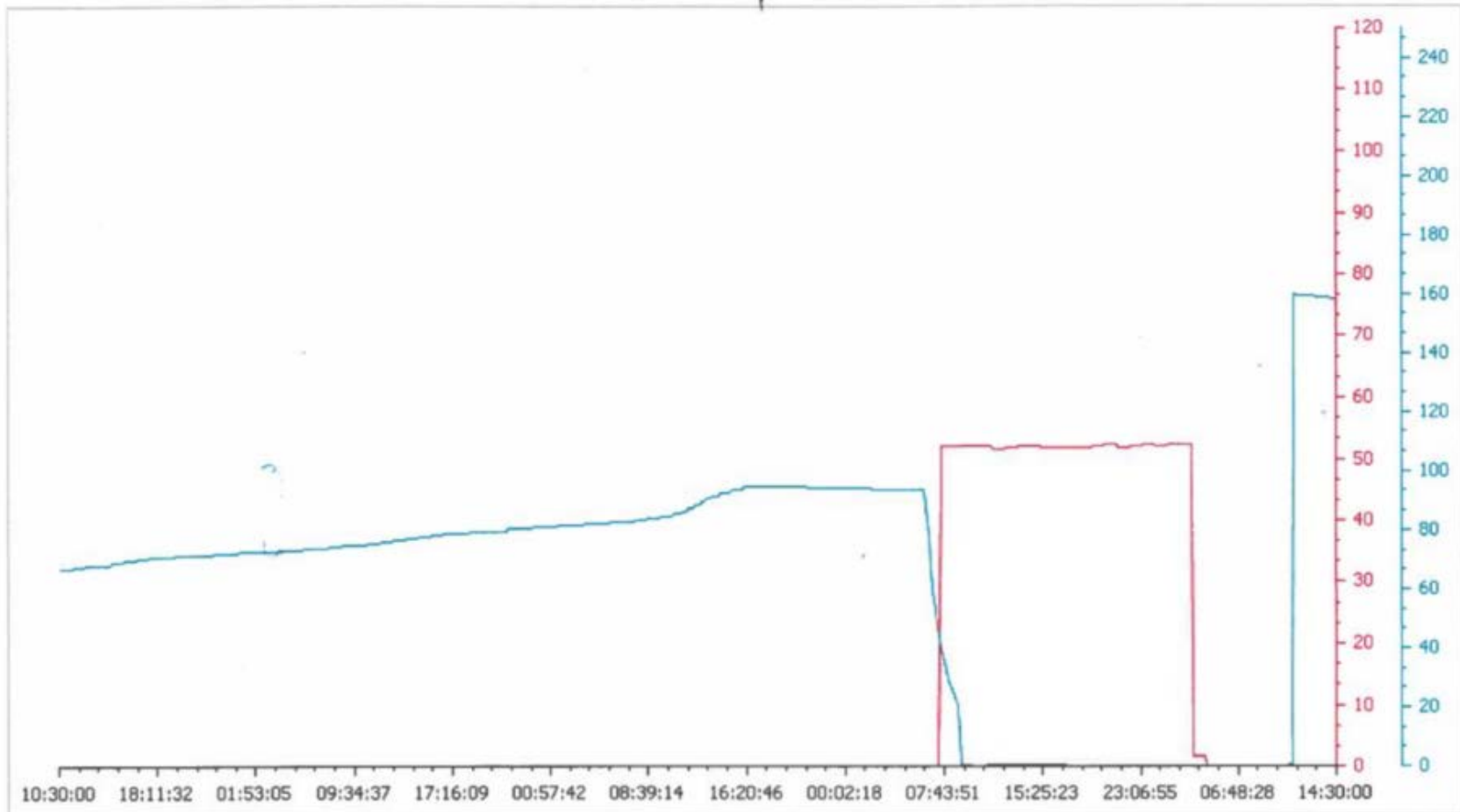
Vaporizer Incident



Start Time : 03/02/2024 10:30:00
 End Time : 03/06/2024 14:30:00



	G	Point Name	Historian	Description	End Value	Units	S	Low Sc	High Sc	Cursor Value
1	<input checked="" type="checkbox"/>	(A) SCRBHTRAMP.UNIT2@HARRIS2	Auto Historian	SCR B HEATER AMPERAGE	-0.04	AMPS	<input checked="" type="checkbox"/>	0	120	-0.03
2	<input checked="" type="checkbox"/>	(A) NHPT3501.UNIT2@HARRIS2	Auto Historian	AMMONIA STORAGE TANK PRESS	157.8	PSIG	<input checked="" type="checkbox"/>	0	250	66.8



Ash Pond Sloughing

Ash sloughing incidents





Questions?